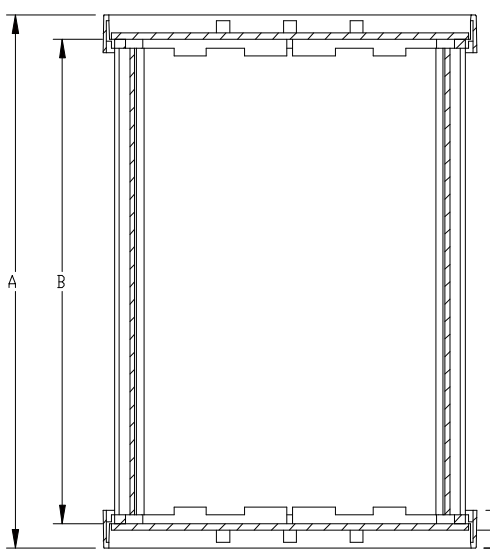
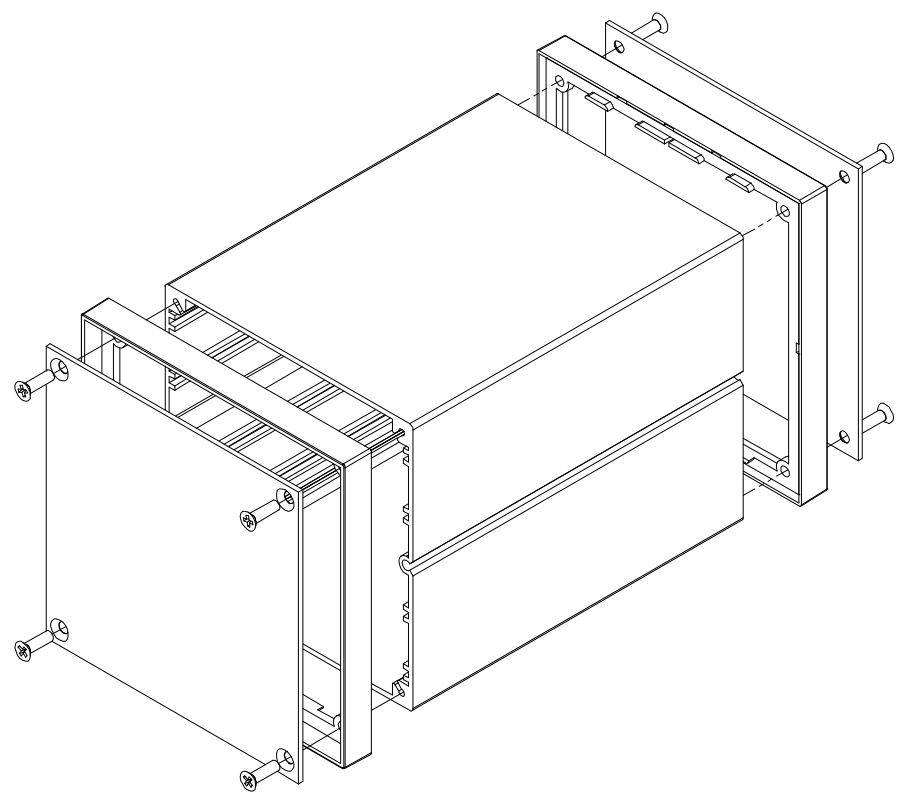
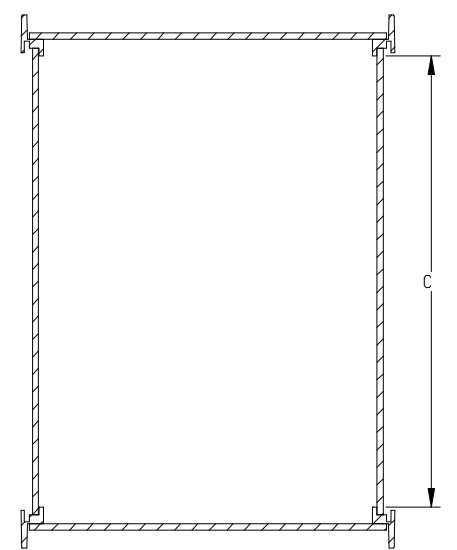


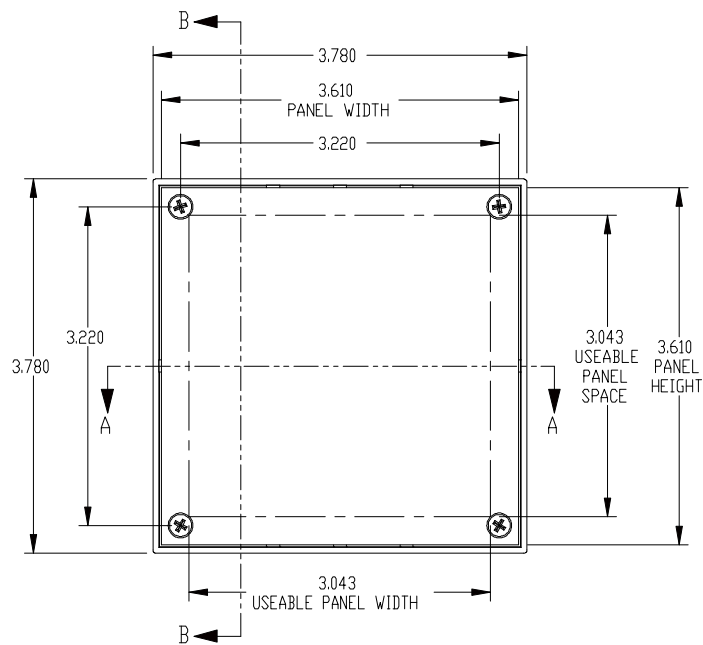
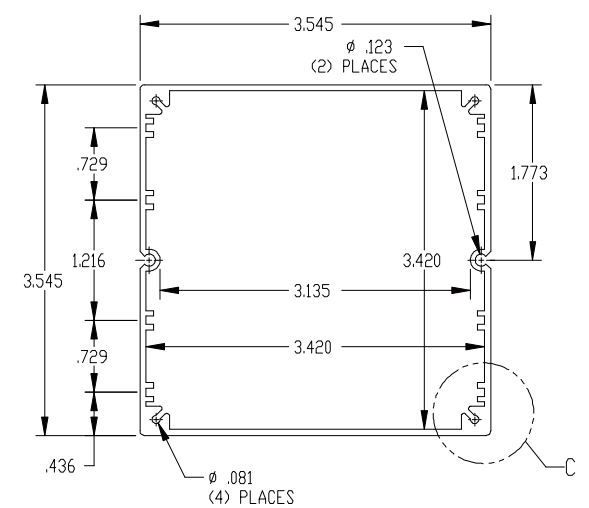
PART NAME	EXTRUDED ALUMINUM BOX	PART No.	EX-4541 & EX-4542 & EX-4543
-----------	-----------------------	----------	-----------------------------



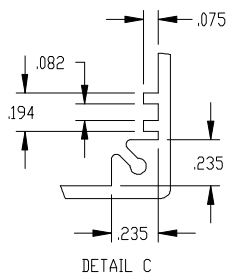
SECTION A-A



SECTION B-B



MATERIAL:
 BODY - ALUMINUM
 BEZEL - UL94V-0 ABS
 PANEL - .060 THK. ALUMINUM
FINISH:
 BODY - SILVER COATING
 BEZEL - BLACK
 PANEL - NATURAL
 EIGHT (8) M3 x 10mm FLAT HEAD SCREWS SUPPLIED TO ATTACH END PANELS AND BEZELS TO BODY (ALTERNATE SCREW #4 x 5/8 FLAT HEAD THREAD CUTTING SCREWS CAN BE SUBSTITUTED)
 RECOMMEND INSERTION TORQUE 6-8 in-lbs.
 ALL DIMENSIONS HAVE $\pm .015$ TOLERANCE UNLESS OTHERWISE SPECIFIED



PART No.	EXTERNAL		INTERNAL CLEARANCE	
	A	B	B	C
EX-4541	5.28	4.80	4.80	4.46
EX-4542	6.88	6.40	6.40	6.06
EX-4543	9.24	8.84	8.84	8.50